

HEAT BARRIER

NEW

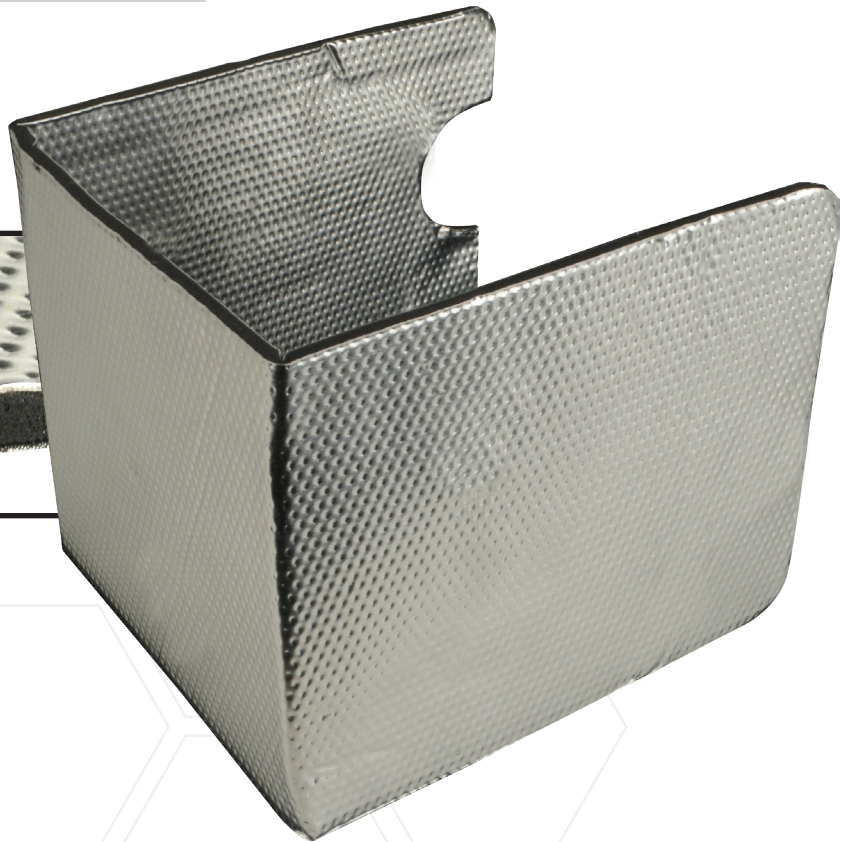
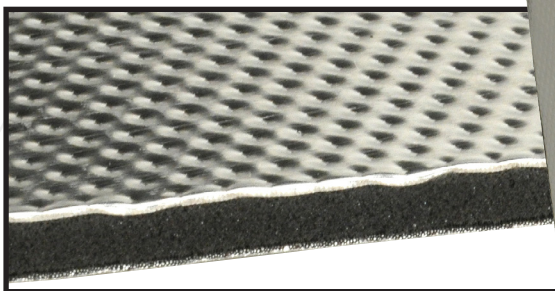
Form-A-Barrier

Light weight, formable rigid shield provides excellent thermal protection up to 1300°F with minimal gap of 1 inch to heat source. Can be formed or bent by hand to conform to odd shapes. Mechanically fasten with pins, screws or bolts. Resistant to most automotive chemicals. Multiple applications include firewalls, interiors, engines and other areas.

- Easily formable
- Both sides have reflective material
- Protection up to 1300°F
- 12" x 12" squares

FORM-A-BARRIER

Part #	Description
011002	12" x 12"



FOR MORE INFORMATION AND OUR COMPLETE PRODUCT LINE GO TO

DesignEngineering.com    

604 Moore Rd. Avon Lake, Ohio 44012
800-264-9472 • 440-930-7940 • (F) 440-930-7967
sales@designengineering.com