

Titanium Protect-A-Sleeve Installation

- STEP 1:** Measure desired length and mark where to cut material
- STEP 2:** Use electrical tape and tape over mark all the way around the sleeving (Fig 1)
- STEP 3:** Using scissors cut through electrical tape and material (Fig 2)
- STEP 4:** Leave tape on while sliding material onto wire or hose (Fig 3)
- STEP 5:** Remove electrical tape and slide heat shrink tubes over ends and clamps. Finish installation by heating shrink tube with heat gun so they seal the end of the sleeving. (Fig 4-7)

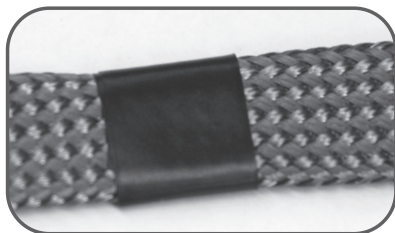


FIGURE 1

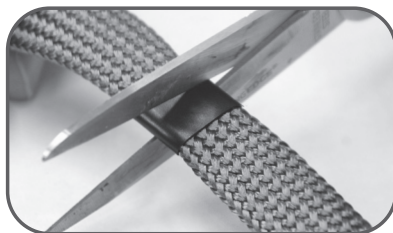


FIGURE 2

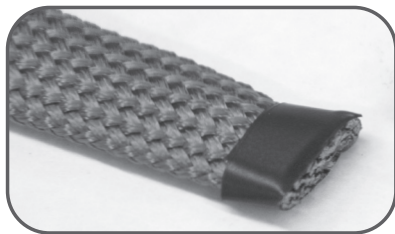


FIGURE 3



FIGURE 4

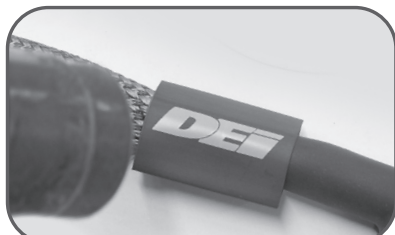


FIGURE 5



FIGURE 6

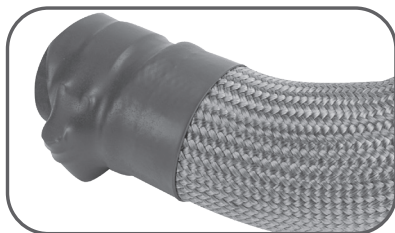


FIGURE 7