



INSTALLATION INSTRUCTIONS

Jeep® Wrangler JL 2-Door Sound Deadening Headliner

PART #'s 50188, 50189, 50190, 50191, 50192

D. 2 - .5" x 1" x 16.5"

E. 2 - .5" x 1" x 16.8"

H. 2 - .25" x 1" x 2.7"

I. 2 - .25" x 1" x 11"

HH. 2 - .25" x 1.77" x 32"

II. 2 - .25" x 1.77" x 29.5"

JJ. 2 - .25" x 1.77" x 28.5"

**KEY:
REMOVABLE FRONT TOPS
D, E, I, H**

**REAR SEAT SECTION
HH, II, JJ**

NOTES: This kit is designed to fit Jeep Wranglers equipped with factory hardtops. One person can install the front panels over the driver and passenger seats. However, it is recommended that a minimum of 2 people install the panels on the back part of the hardtop, as they are large. We suggest you remove the hardtop from vehicle and place on the floor in an inverted position. Placing the hardtop on a blanket is recommended to protect it from scratches. Lay the parts in place with the paper release liner left in place to note its position and where it will be installed. Once the adhesive contacts a clean surface, it is extremely difficult to remove the adhesive. Be sure the part is in the desired position before adhering it!

SURFACE PREP:

Vacuum or wipe down installation area to remove all loose debris/dust. Then clean with isopropyl alcohol to remove any contaminants.

TOOLS:

Use manufacturer's suggested tools for hardtop removal.

NOTE: Layout pieces of headliner material to let any wrinkles that formed in the packaging to smooth out.

1.) Remove the hardtop from vehicle following the manufacturer's suggested removal. Placing the hardtop on a blanket is recommended to protect it from scratches. Make sure to place the hardtop on the blanket in an inverted position.



Figure 1

Figure 1 – Hardtop removed and inverted

2.) Once the hardtop is removed, clean the inside surface of the hardtop with isopropyl alcohol. This will ensure a good adhesive bond between the headliner and the hardtop.

*Note: The adhesive will not stick properly to a dirty surface.



Figure 3

3.) Install the foam filler strips in the recessed molded ribs. This will minimize the ribs showing through to the surface. Showing of some of the ribs contours is normal. Test fit the filler strips in each location before sticking down. Strips are different lengths, widths and thicknesses. See notes for guide. (Figure 3)

FILLER STRIP LOCATION DIAGRAM

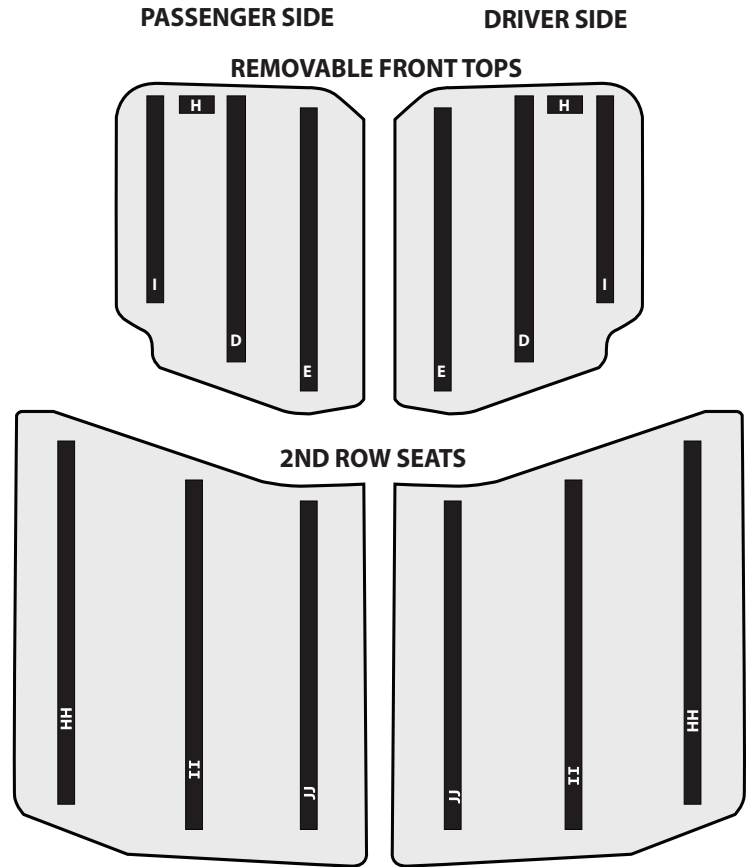


Figure 4

4.) Remove one edge of the paper release liner from the back of the part about to be installed. (Figure 4)



It helps to use a utility knife to gently separate the paper liner from the adhesive backing



Figure 5. Lay panel in place by applying gentle pressure

5.) Once the starting edge is adhered, lay down the rest of the part pulling the backer liner off while applying gentle pressure by hand as shown in Figure 5.

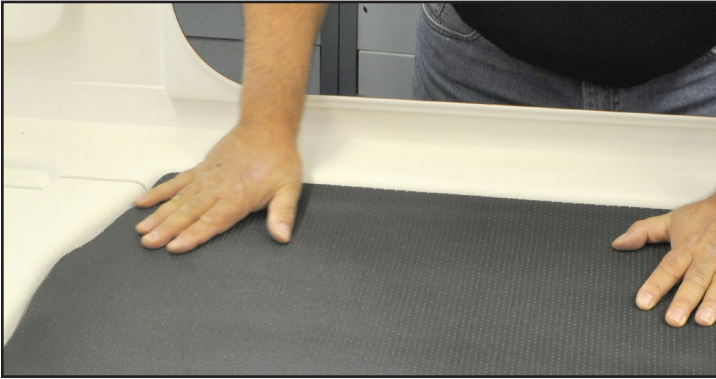


Figure 6.

6.) Once the parts have been installed, apply pressure by hand. (Figure 6)

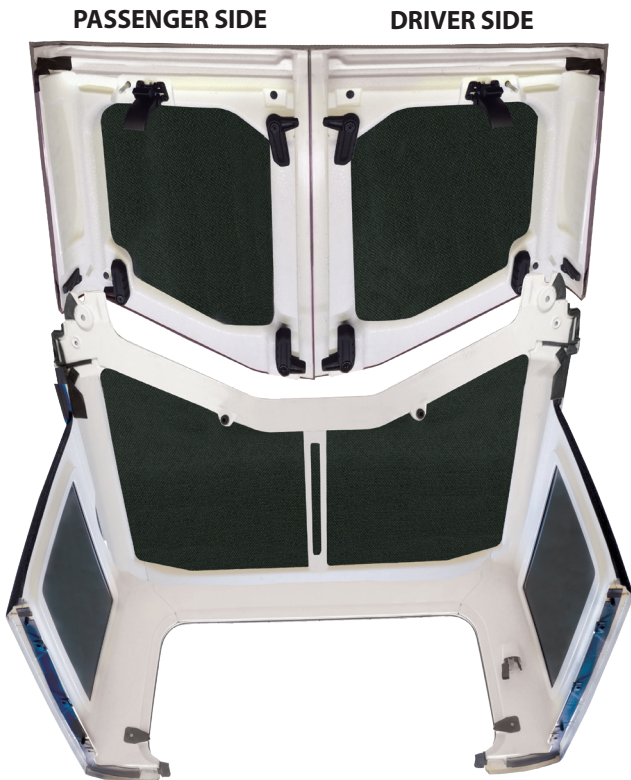


Figure 7

7.) Once all parts are installed, allow parts to sit in the top inverted for 25 minutes. (Figure 7). This will allow the adhesive to set properly. Once the parts have set, you are ready to install the top back on your Jeep.

8.) Reinstall the hardtop according to the manufacturer's suggested installation.



www.BoomMat.com
800-264-9472

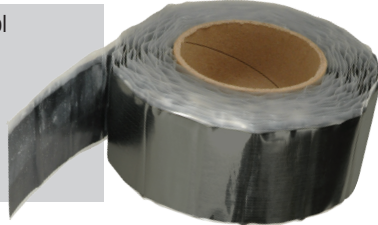
Boom Mat Vibration Damping Material

- Easy-Peel plastic release liner
Not paper backing that tears
- Enhances stereo performance & sound
- Gives you a quiet & comfortable interior
- Minimal prep & install time
- Performs in extreme temperatures



Boom Mat Tape Vibration Damping Material

- Great spot vibration and noise control
- Use to seal leaks and air gaps
- Easy peel off backing liner
- Unlimited home and auto uses
- Performs in extreme temperatures



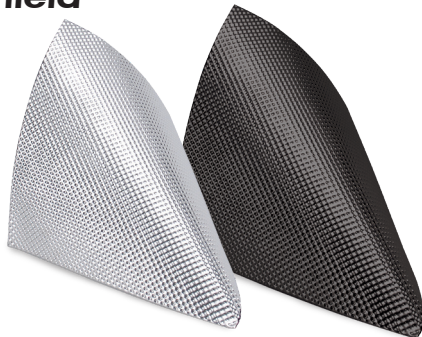
Boom Mat Spray-On Damping Material

- Controls vibrations in hard to reach areas
- Enhances stereo performance & sound
- Gives you a quiet & comfortable interior
- Paintable surface
- Performs in extreme temperatures



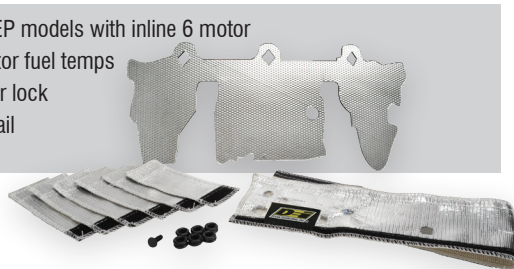
Floor & Tunnel Shield

- 10 mil dimpled aluminum face
- Protection for engine components
- Protection for painted body panels
- Comfortable interior at any temperature
- Hi-temp adhesive for a "do-it-once" install



Jeep® Fuel Rail & Injector Cover Kit

- Fits 1997-2004 4.0L JEEP models with inline 6 motor
- Reduces fuel rail & injector fuel temps
- Reduces chance of vapor lock
- Protect injectors & fuel rail from engine heat



Jeep® JK 2007-11 Header Wrap Kit

- Includes everything needed for a typical set of shorty headers
- Withstands extreme temperatures
- Resists solvents, oils, fuel, acids & chemicals
- Reduces underhood temperatures



EXHAUST WRAP



PLUG BOOT & WIRE PROTECTION



LINE & HOSE SLEEVING



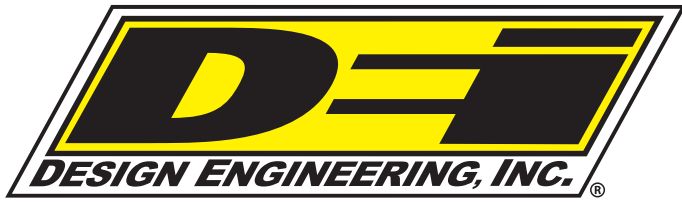
HEAT BARRIERS



TURBO SHIELDS



www.DesignEngineering.com



INSTALLATION INSTRUCTIONS

Jeep JL Side Window Kit

KIT CONTENTS:

LEATHER LOOK FINISH

- 50271 Jeep JL 2dr 2018-UP Grey Leather Look
- 50272 Jeep JL 2dr 2018-UP Black Leather Look

ORIGINAL FINISH

- 50268 Jeep JL 2dr 2018-UP Black
- 50269 Jeep JL 2dr 2018-UP Grey
- 50270 Jeep JL 2dr 2018-UP White

NOTES: This kit is designed to fit Jeep Wrangler JL equipped with factory hardtops. We suggest you remove the hardtop from vehicle and place on the floor in an inverted position. Placing the hardtop on a blanket is recommended to protect it from scratches. Test fit the parts in place with the paper release liner left in place to note its position and where it will be installed. Once the adhesive contacts a clean surface, it is extremely difficult to remove the adhesive. Be sure the part is in the desired position before adhering it!

TOOLS:

Use manufacturer's suggested tools for hardtop removal.

SURFACE PREP:

Vacuum or wipe down installation area to remove all loose debris/dust. Then clean with isopropyl alcohol to remove any contaminants.

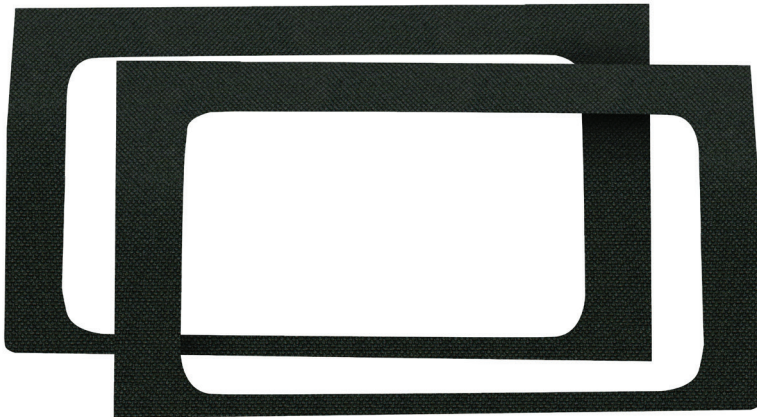


Figure 1

- 1.) Remove the hardtop from vehicle following the manufacturer's suggested removal procedure. Placing the hardtop on a blanket is recommended to protect it from scratches. Make sure to place the hardtop on the blanket in an inverted position.
- 2.) Once the hardtop is removed, clean the surface with isopropyl alcohol. This ensures a good adhesive bond between the window kit and the hardtop. *Note: The adhesive will not stick properly to a dirty surface.
- 3.) Test fit to determine the correct placement for each side. (Figure 1)



Figure 2

4.) Peel paper backing slowly and press fit piece as you pull backing off.
(Figure 2)



Figure 3

5.) Firmly press window trim piece in place after entire backing is removed to ensure a tight bond on entire piece. (Figure 3)

6.) Reinstall the hardtop according to the manufacturer's suggested installation procedure.



www.BoomMat.com