

INSTALLATION INSTRUCTIONS

Thank you for purchasing genuine Design Engineering, Inc. products. Be sure to always wear the proper safety equipment when installing any DEI product. Design Engineering Inc. WILL NOT BE HELD LIABLE FOR IMPROPER INSTALLATION OR USE OF THIS PRODUCT. Please follow all instructions provided. If you are unsure of any installation procedure, please contact a certified technician.

DESCRIPTION: 51409 - 67 - 69 General Motors F-Body Camaro/Firebird Kick Panel Insulation Kit

KIT CONTENTS:

- 2 pc Pre-Cut D-Mat insulation
- 10 pc 2" x 4" Boom Mat Damping Material
- Instructions

TOOLS NEEDED:

Scissors

SAFETY:

Safety glasses
Gloves (Boom Mat tape edges may be sharp)

NOTE OF CAUTION: Wear eye and hand protection when installing all materials.

OVERVIEW: 2 step heat and sound control kit to eliminate vibrations, absorb sound and block heat from kick panel areas.

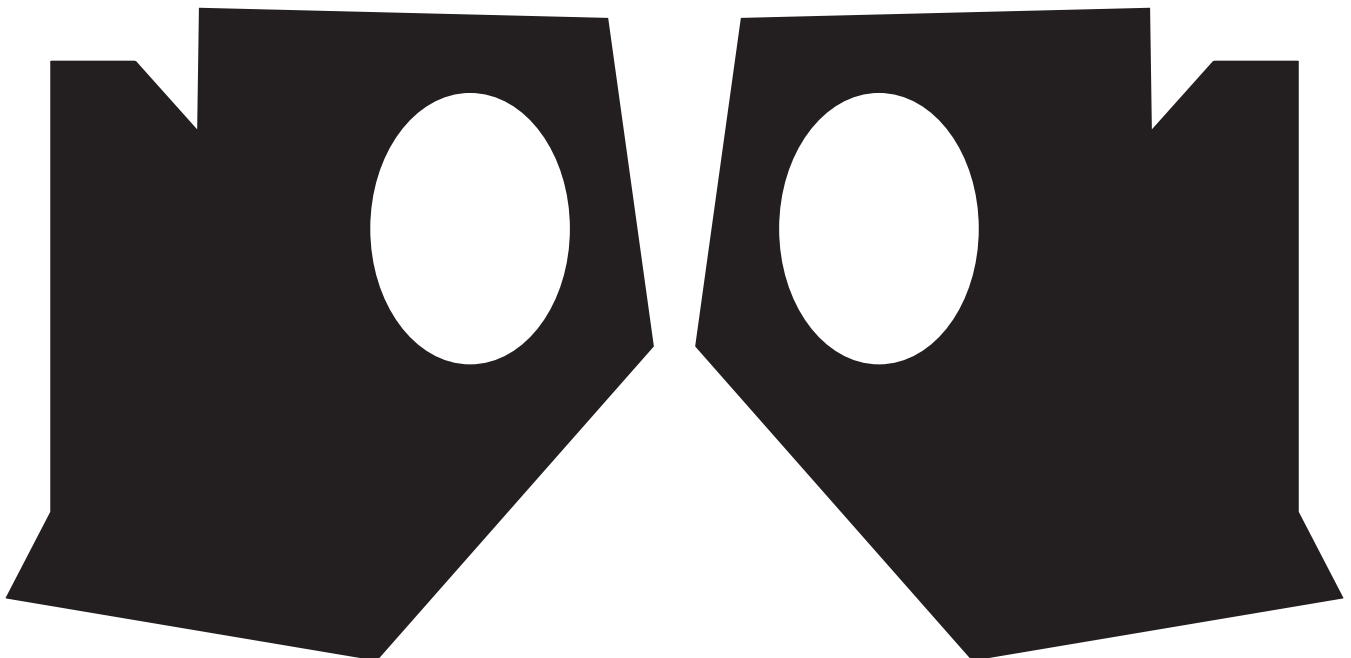


Diagram 1 of D-Mat pre-cut kick panel insulation

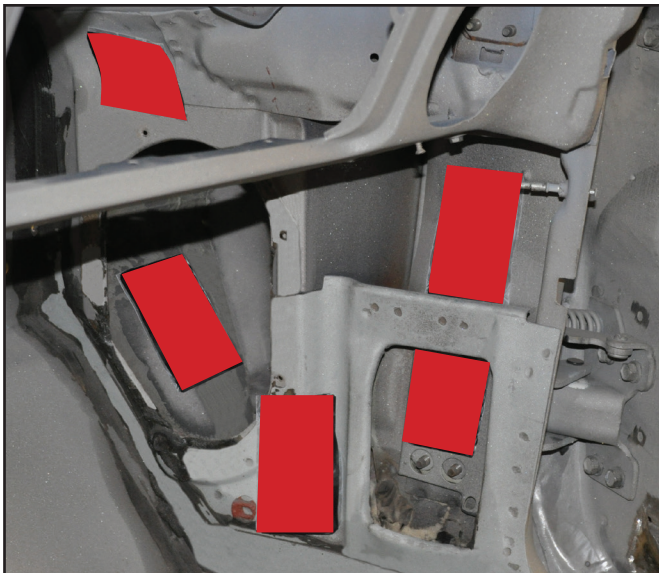


Fig 1



Fig 2



Fig 3

PREPARATION

STEP 1. Remove both drivers and passenger side kick panels.

STEP 2. Clean and vacuum any dirt or debris from area. It needs to be clean and dry to start the installation.

INSTALLATION

STEP 4. Open the contents of your kit. You will see two pre-cut pieces of our D-Mat insulation and a bag containing the Boom Mat damping material.

STEP 5. See **FIG 1** for placement positions for all the Damping Material. Exact location is not critical; this gives you the general location to apply each piece of material.

STEP 6. Peel the release liner from the back of the damping material and position according to **FIG 2**. Firmly press the material to the metal. A good contact is needed for the Damping material to function properly. Any air trapped under the Damping material will affect its performance.

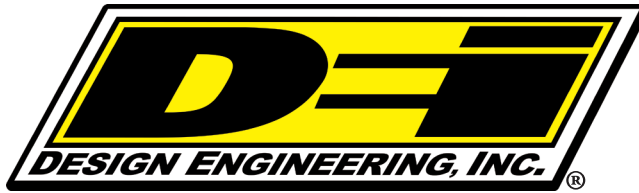
STEP 7. Repeat for each piece.

STEP 8. Once all the Damping material is in place you can begin to install the D-Mat insulation. The D-Mat has a scrim layer on one side. This layer installs facing the interior.

STEP 9. Lay each piece into place to test fit. You may have to slightly trim some material as each car can have some variations in the body. **FIG 3** Once you are satisfied with the fit you can remove the insulation and apply your choice of contact adhesive following the directions from the adhesive. **FIG 3**

STEP 10. Tech Tip. "You only need to apply a light coat of adhesive" to hold everything in place. This will also allow you to easily remove the insulation in the future if needed.

STEP 11. Now you can re-install your kick panels.



INSTALLATION INSTRUCTIONS

Thank you for purchasing genuine Design Engineering, Inc. products. Be sure to always wear the proper safety equipment when installing any DEI product. Design Engineering Inc. WILL NOT BE HELD LIABLE FOR IMPROPER INSTALLATION OR USE OF THIS PRODUCT. Please follow all instructions provided. If you are unsure of any installation procedure, please contact a certified technician.

DESCRIPTION: 51404
1967-1969 Camaro/Firebird trunk insulation kit

KIT CONTENTS:
Pre-Cut D-mat insulation (3 panels)
Boom Mat damping material.
4 - 2" x 6"
5 - 2" x 12"
2 - 6" x 12"
1 Can Adhesive spray
• Instructions

TOOLS NEEDED:
Scissors

SAFETY:
Safety glasses
Gloves

NOTE OF CAUTION: Wear eye and hand protection when installing all materials.

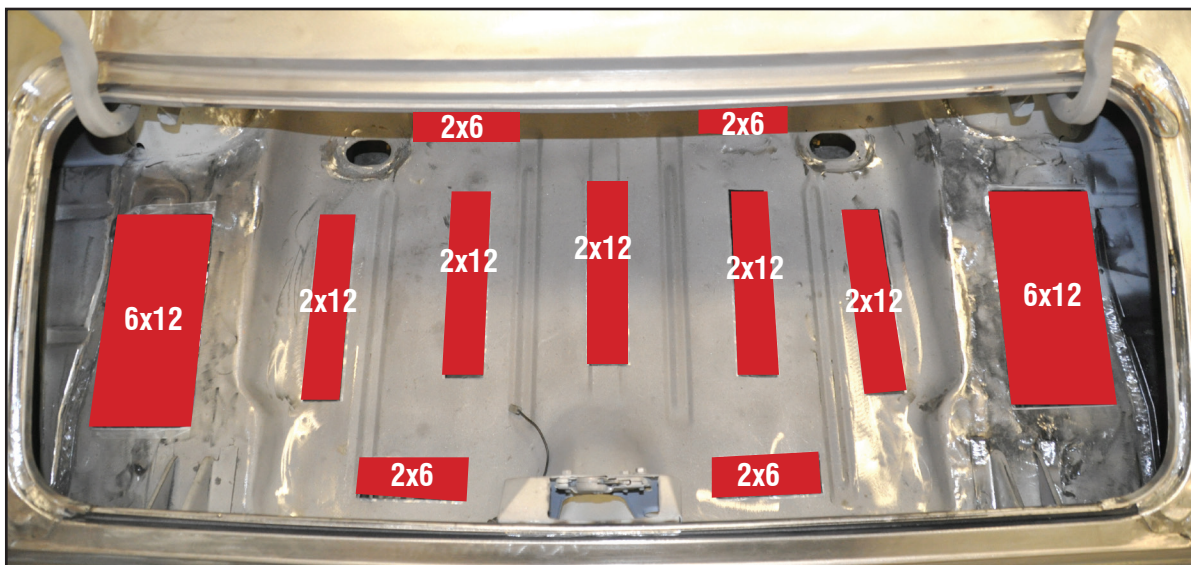
OVERVIEW: This kit controls heat and sound on the trunks of 67-69 Camaros and Firebirds

STEP 1. Remove all trunk lining material.

STEP 2. Clean trunk floor, floor must be clean and dry from grease, dirt and any other material.

STEP 3. See **Fig 1** for placement of the Boom mat damping material. (Placement marked in red)

STEP 4. Lay out the Boom Mat and then peel the backing and firmly press into place making sure you have full contact with the metal floor.



**Damping
Material
Placement**

Fig 1

STEP 5. Pre-Fit the D-Mat insulation material, some trimming maybe needed as slight differences can happen between cars and models. Once you have the panels fitted **Fig 2** use the included spray adhesive to fasten to the trunk floor. Spray the fiber aide of the material and the trunk floor. Allow to dry then press the panel into place. See instructions on the adhesive can.

STEP 6. You can now install your flooring material on top of the insulation.

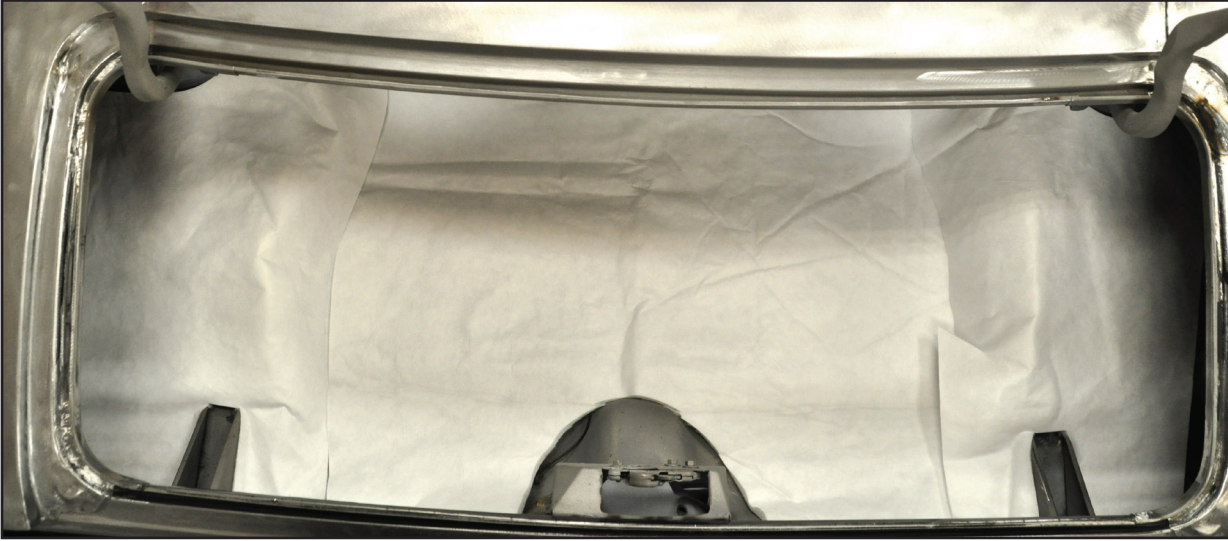
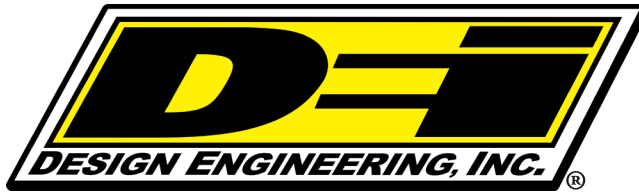


Fig 2





INSTALLATION INSTRUCTIONS

Thank you for purchasing genuine Design Engineering, Inc. products. Be sure to always wear the proper safety equipment when installing any DEI product. Design Engineering Inc. WILL NOT BE HELD LIABLE FOR IMPROPER INSTALLATION OR USE OF THIS PRODUCT. Please follow all instructions provided. If you are unsure of any installation procedure, please contact a certified technician.

DESCRIPTION: 51405
1967-1969 Camaro/Firebird package tray / speaker deck insulation kit

KIT CONTENTS:
Pre-Cut D-Mat insulation Panel
Boom mat damping material
- 1 - 6" x 12"
- 2 - 2" x 12"
• Instructions

TOOLS NEEDED:
Scissors

SAFETY:
Safety glasses
Gloves

NOTE OF CAUTION: Wear eye and hand protection when installing all materials.

OVERVIEW: This kit controls heat and sound on the package tray of 67-69 Camaros and Firebirds

STEP 1. Remove upper back seat cushion and package tray cover.

STEP 2. Clean the package tray area from all grease, dirt and other materials.

STEP 3. The area must be clean for the Boom mat to adhere.

STEP 4. See **Fig 1** for placement of the Boom mat damping material. (Placement marked in red)

5. Peel back and firmly press into place. It must have full contact with the metal to function properly.



Fig 1



Fig 2

STEP 6. Using the Spray adhesive in the kit, spray both the fiber side and the package tray area.

Fig 2

STEP 7 Let dry then lay the precut D-Mat panel on top of the package tray. Some minor trimming maybe needs as variances in models and years may happen.

Fig 3

STEP 8. Reinstall you package tray and seat cushion.

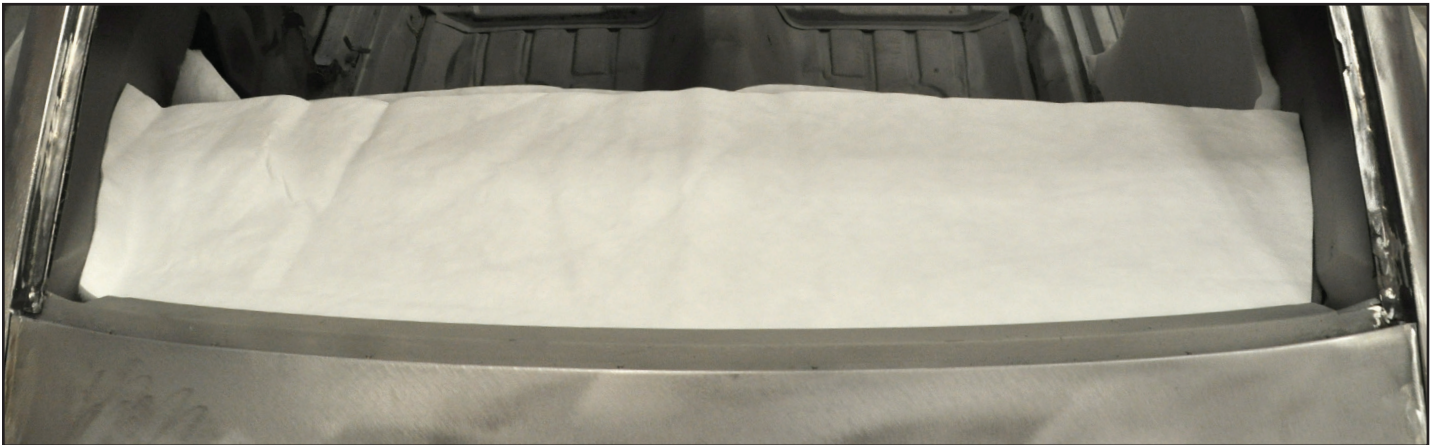
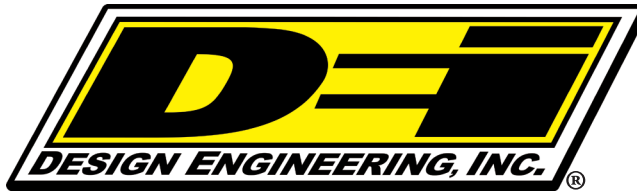


Fig 3



INSTALLATION INSTRUCTIONS

Thank you for purchasing genuine Design Engineering, Inc. products. Be sure to always wear the proper safety equipment when installing any DEI product. Design Engineering Inc. WILL NOT BE HELD LIABLE FOR IMPROPER INSTALLATION OR USE OF THIS PRODUCT. Please follow all instructions provided. If you are unsure of any installation procedure, please contact a certified technician.

DESCRIPTION: 500406
1967-1969 Camaro/Firebird trunk divider insulation kit

KIT CONTENTS:
Pre-cut D-Mat insulation panel
Boom mat damping material
• Instructions

TOOLS NEEDED:
Scissors

SAFETY:
Safety glasses
Gloves

NOTE OF CAUTION: Wear eye and hand protection when installing all materials.

OVERVIEW: This kit controls heat and sound on the trunk divider of 67-69 Camaro and Firebird

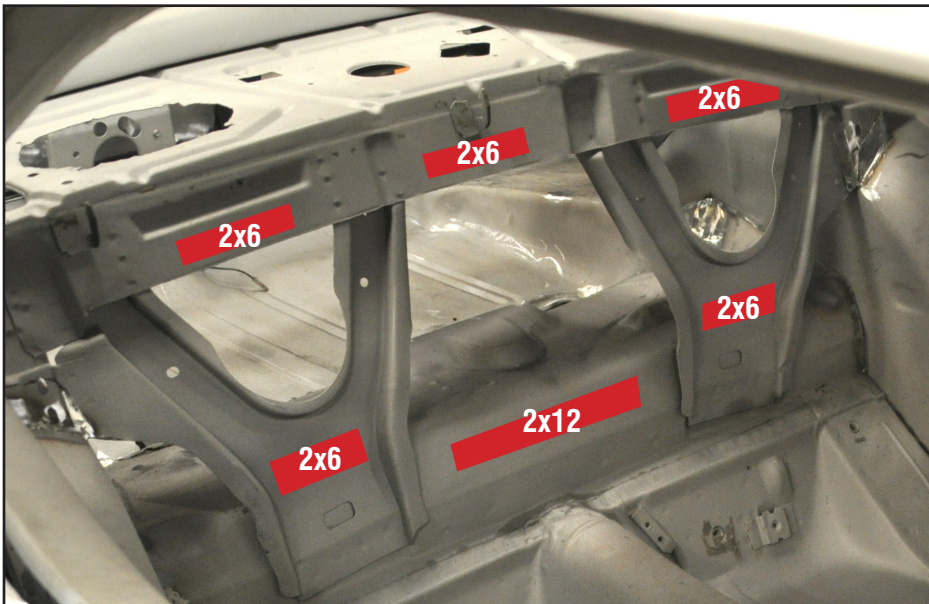


Fig 1

STEP 1. Remove back seat top and bottom.

STEP 2. Clean all the surfaces. They must be free from dirt, grease or other material that would prevent the Boom Mat from sticking.

STEP 3. See **Fig 1** for placement of the Boom mat material. (Locations marked in red) When installing the Boom Mat make sure to firmly press into place. It must have full contact to perform correctly.

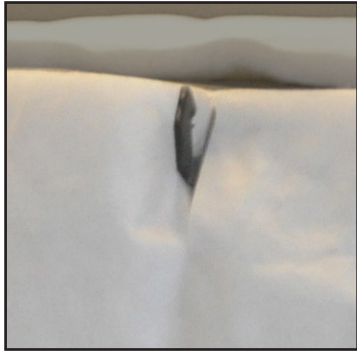
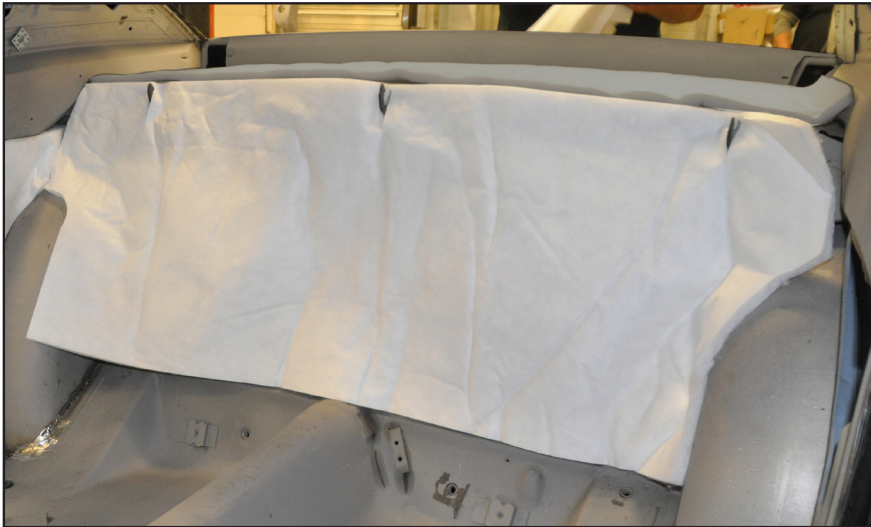


Fig 2

STEP 4. Place divider insulation panel over the hooks for the back seat upper cushion.

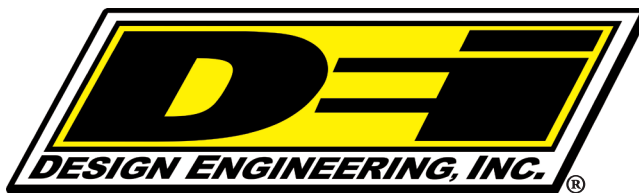
Fig 2 The insulation will hang in place and be held in tightly by the back seat.



STEP 5. Some trimming may be needed as different cars and model years may have slight variations to the pattern.

STEP 6. Once install replace the lower and upper back seat cushions.





INSTALLATION INSTRUCTIONS

Thank you for purchasing genuine Design Engineering, Inc. products. Be sure to always wear the proper safety equipment when installing any DEI product. Design Engineering Inc. WILL NOT BE HELD LIABLE FOR IMPROPER INSTALLATION OR USE OF THIS PRODUCT. Please follow all instructions provided. If you are unsure of any installation procedure, please contact a certified technician.

DESCRIPTION: 51407
1967-1969 Camaro/Firebird trunk floor insulation kit

KIT CONTENTS:
7 pc Under Carpet Lite
31pc Boom Mat
1 Boom Mat Roller
1 Boom mat Spray
• Instructions

TOOLS NEEDED:
Scissors

SAFETY:
Safety glasses
Gloves

NOTE OF CAUTION: Wear eye and hand protection when installing all materials.

OVERVIEW: This kit controls heat and sound on the floor of 67-69 Camaros and Firebirds

Preparation

STEP 1. Remove seats, old carpet, consoles. The entire floor must be exposed to the metal surface.

STEP 2. Clean and vacuum any dirt or debris from the floor. You need a clean dry floor to start the installation.

STEP 3. Now is the time to repair any rust or damage. We recommend spraying the floor with our Boom Mat Surface Prep Spray 010491. It is designed to act as a primer and also cover and encapsulate any surface rust.

Installation

STEP 1. Open the contents of your kit. You will see seven pre-cut pieces of Under Carpet Lite; a bag containing the Boom Mat damping material, 1 can of Boom Mat spray Adhesive and 1 Roller. Separate the Boom Mat Damping material into sizes, see the kit contents above.

STEP 2. See **Fig 1 & Fig 2** for placement positions for all the Damping Material. Exact location is not critical; this gives you the general location to apply each piece of material.

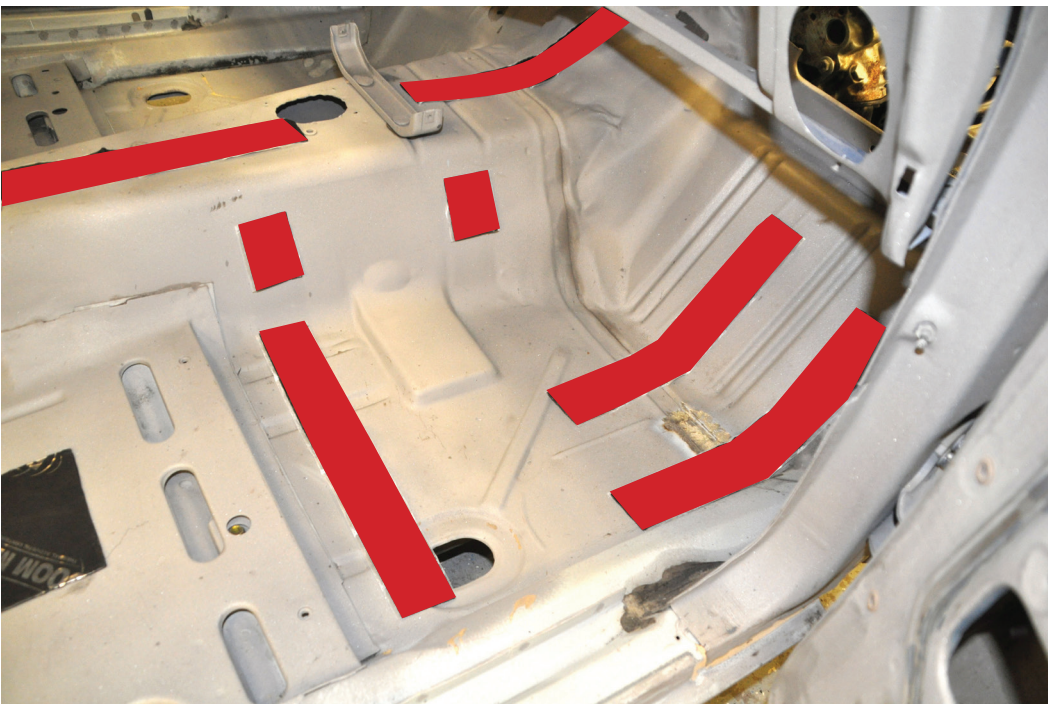
STEP 3. Peel the release liner from the back of the damping material and place on the floor according to figure 2. Use the included roller to firmly press the material to the floor. A good contact is needed for the Damping material to function properly. Any air trapped under the Damping material will affect its performance.



Damping Material Placement

Apply to driver and passenger sides.

Fig 1



Damping Material Placement

Apply to driver and passenger side front areas.

Fig 2

STEP 4. Repeat for each piece and for driver side of floor.

STEP 5. Use the Boom Mat spray in corner areas and for addition coverage where needed.

STEP 6. Once all the Damping material is in place you can begin to install the Under carpet Lite. See **Fig 3** for the correct position of each piece.

STEP 7. Lay each piece into place to test fit. You may have to slightly trim some material as each car can have some variations in the body. Once you are satisfied with the fit you can lift off one piece at a time to glue into place.

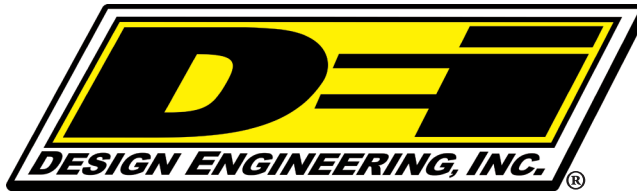
STEP 8. Follow the directions on the can of Boom Mat Adhesive. This is a contact type adhesive so you will need to spray both the floor and the back side of the Under Carpet Lite. Let the glue dry before placing the Under Carpet Lite back into place for permanent installation.

STEP 9. Tech Tip. “You only need to apply a light coat of adhesive” to hold everything in place. This will also allow you to easily remove the Under carpet lite in the future if needed.

STEP 10. Now you can install your carpet and interior.



Fig 3 Under Carpet Lite Placement



INSTALLATION INSTRUCTIONS

Thank you for purchasing genuine Design Engineering, Inc. products. Be sure to always wear the proper safety equipment when installing any DEI product. Design Engineering Inc. WILL NOT BE HELD LIABLE FOR IMPROPER INSTALLATION OR USE OF THIS PRODUCT. Please follow all instructions provided. If you are unsure of any installation procedure, please contact a certified technician.

DESCRIPTION: 500410
1967-1969 Camaro/Firebird side panel insulation kit

KIT CONTENTS:
12 pc precut D-Mat insulation
13 pc Boom Mat damping material
2 - 2x24,
3 - 2x12
4 - 2x6
4 - 6x12 x4
1 Can Adhesive spray
• Instructions

TOOLS NEEDED:

Scissors

SAFETY:

Safety glasses
Gloves

NOTE OF CAUTION: Wear eye and hand protection when installing all materials.

OVERVIEW: This kit controls heat and sound on the side panels of 67-69 Camaros and Firebirds



Fig 1

Damping Material

2x12
Inside trunk on
wheel well. Both
driver and
passenger side

STEP 1. Remove interior and make sure all surfaces are clean and free from dirt and grease.

STEP 2. See **Fig 1, Fig 2, Fig 3, Fig 4 & Fig 5** for placement and size of Boom Mat material (Placement marked in red)

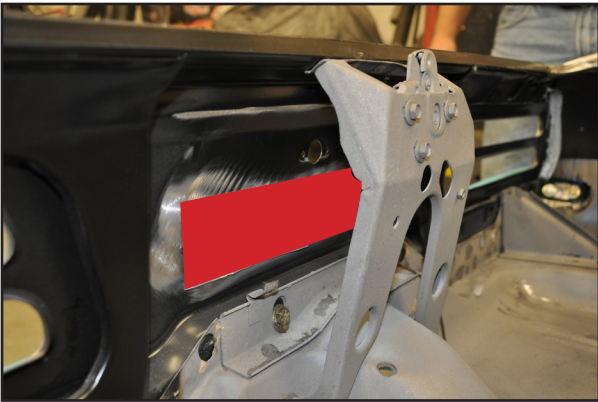


Fig 2

Damping Material

2x24
Inside trunk on
rear quarter panel.
Both driver and
passenger side

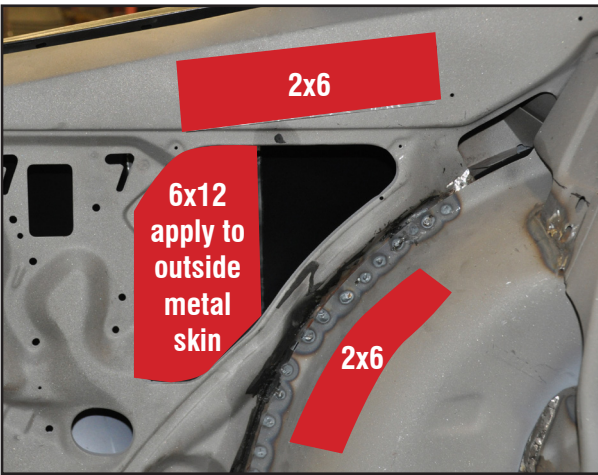
STEP 3. Test fit all Boom Mat in place then peel and stick. Make sure to press firmly in place to ensure a good bond to the metal.



Damping Material

2x12
In trunk between
tail lights

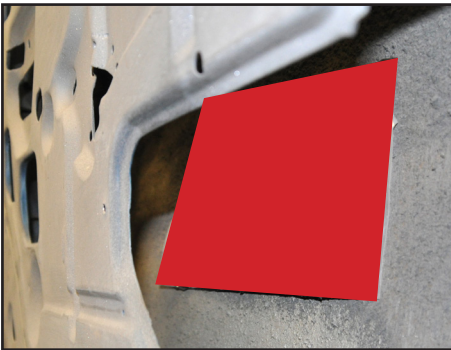
Fig 3



Damping Material

2x6
2x6
6x12
Both driver and
passenger side

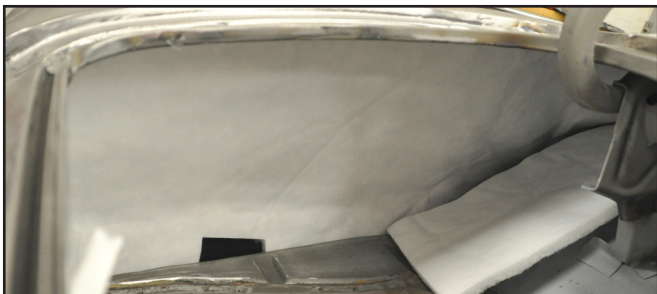
Fig 4



Damping Material

6x12
Inside doors Both driver
and passenger side

Fig 5



D-MAT

Inside trunk on
rear quarter
panels and wheel
well. Both driver
and passenegr
sides

Fig 6

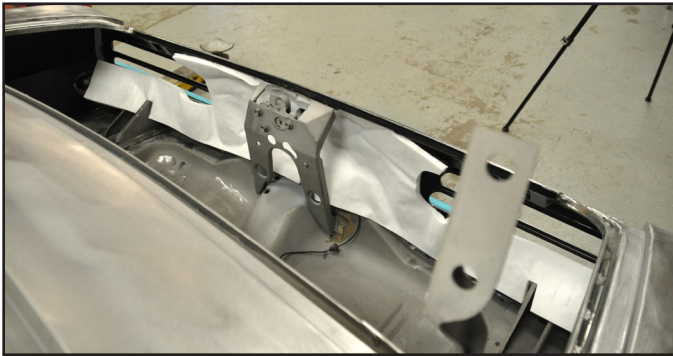


STEP 4. See **Fig 6, Fig 7, Fig 8, Fig 9** for placement of D-Mat insulation.

STEP 5. Pre fit each piece to make sure they are in the correct location. Some minor trimming maybe needed as each car can be slightly different.

STEP 6. Once all the pieces are in place remove and use the spray adhesive following the instructions on the can.

STEP 7. Work one piece at a time until all pieces are installed.



D-MAT
Rear teal light panel. 2 pieces



Fig 7



D-MAT
Rear seat side panels. Both driver and passenger sides

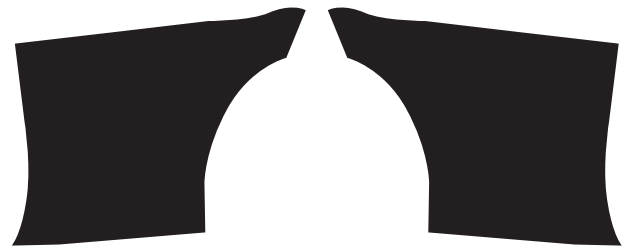
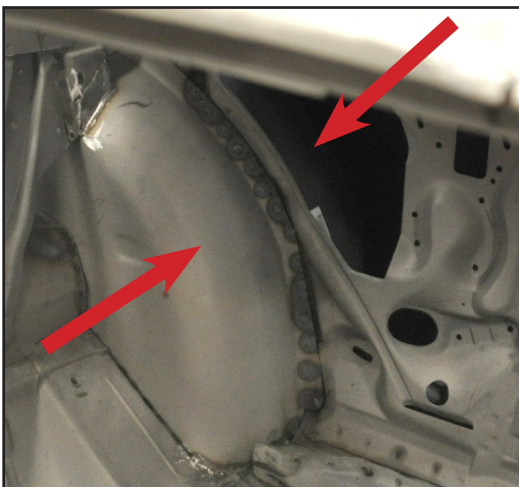


Fig 8



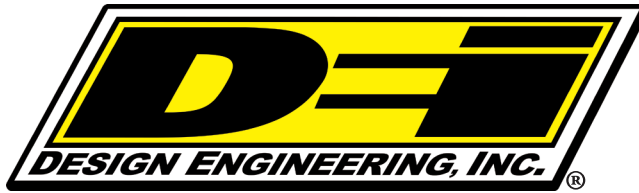
D-MAT
Rear seat wheel well. One piece inside the two metal panels and one outside.



On wheel well between two panels

On wheel well by back seat

Fig 9



INSTALLATION INSTRUCTIONS

Thank you for purchasing genuine Design Engineering, Inc. products. Be sure to always wear the proper safety equipment when installing any DEI product. Design Engineering Inc. WILL NOT BE HELD LIABLE FOR IMPROPER INSTALLATION OR USE OF THIS PRODUCT. Please follow all instructions provided. If you are unsure of any installation procedure, please contact a certified technician.

DESCRIPTION: 51412
1967-1969 Camaro/Firebird firewall insulation kit

KIT CONTENTS:
Pre-Cut D-mat insulation (1 panels)
Boom Mat 2" x 6" x 6 pieces
• Instructions

TOOLS NEEDED:
Scissors

SAFETY:
Safety glasses
Gloves

NOTE OF CAUTION: Wear eye and hand protection when installing all materials.

OVERVIEW: This kit controls heat and sound on the firewall of 67-69 Camaros and Firebirds

STEP 1. Remove carpet and old damping material

STEP 2. Clean area, must be free from dirt and grease

STEP 3. Apply Boom Mat 2" x 6" damping material strips to firewall, spread strips out over the width of the firewall. Exact location is not critical. Firmly press into place

STEP 4. Test fit D-Mat insulation for fitment. Slight trimming may be needed

STEP 5. Follow instruction on the provided adhesive and attach D-Mat insulation

STEP 6. Reinstall carpet

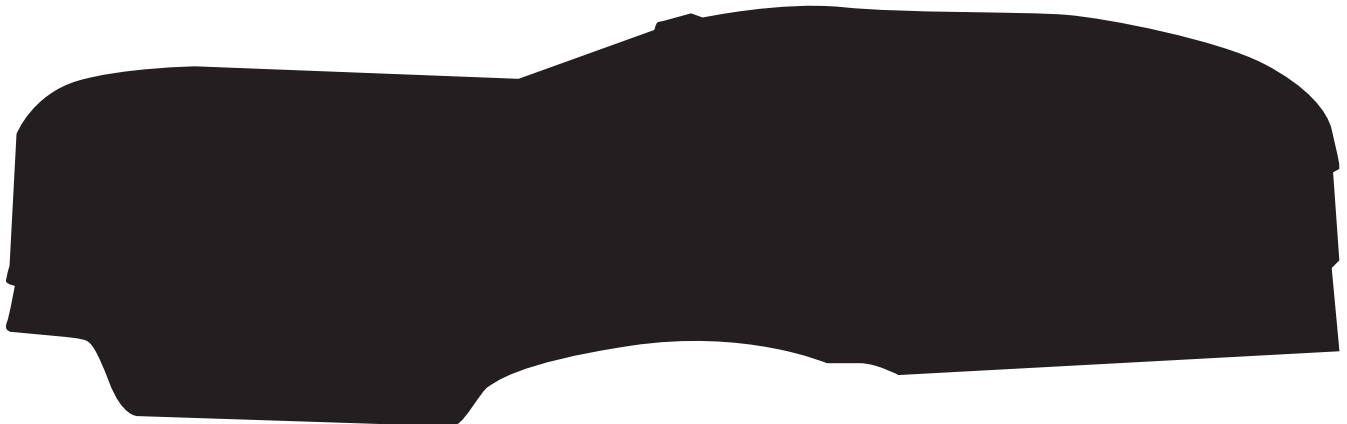
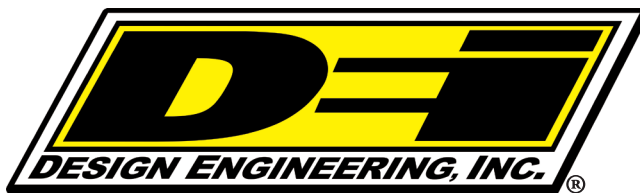


Fig 1



INSTALLATION INSTRUCTIONS

Thank you for purchasing genuine Design Engineering, Inc. products. Be sure to always wear the proper safety equipment when installing any DEI product. Design Engineering Inc. WILL NOT BE HELD LIABLE FOR IMPROPER INSTALLATION OR USE OF THIS PRODUCT. Please follow all instructions provided. If you are unsure of any installation procedure, please contact a certified technician.

DESCRIPTION: 500408
1967-1969 Gen 1 Camaro/Firebird roof insulation kit

KIT CONTENTS:
1 can spray adhesive
6 precut D-mat insulation panels
4 - 6"x6" squares of Boom mat.
• Instructions

TOOLS NEEDED:

Scissors

SAFETY:

Safety glasses
Gloves

NOTE OF CAUTION: Wear eye and hand protection when installing all materials.

OVERVIEW: This kit controls heat and sound in roof panels of 67-69 Camaro and Firebird

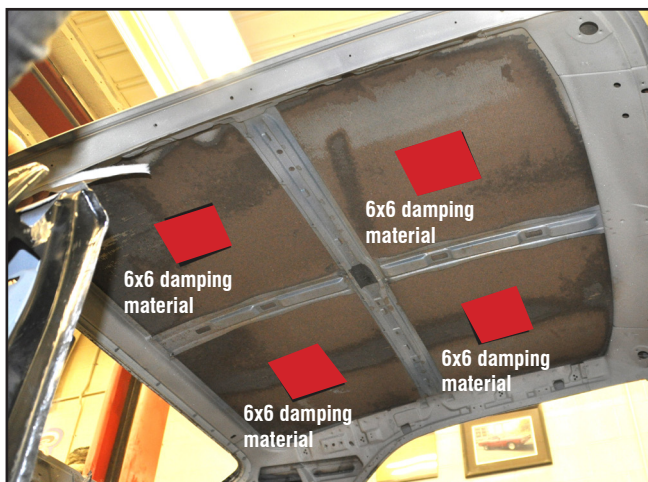


Fig 1

STEP 1. Remove factory headliner and any material adhered to the roof.

STEP 2. Clean roof area; remove any dirt, grease or material from metal. Both the boom mat and adhesive need a clean dry surface to adhere to.

STEP 3. Apply one 6" x 6" square of Boom Mat damping material in the center of each panel. (Market in red) **FIG 2**

Be sure to press down to make sure you have complete contact of the Boom mat to the roof surface.



Fig 2

STEP 4. Match each pre-cut D-mat panel to the shape of the roof and the rear side pillars. Pre-fit the insulation to make sure you have a good fit. Some minor trimming may be necessary. Every car is slightly different so some trimming may be needed.

STEP 5. Apply the spray adhesive per the instructions on the can. You must spray both the insulation and the roof area where it will be applied. Allow to dry before placing insulation in place. Apply adhesive on fiber side of D-Mat

Fig 2



Fig 3

STEP 6. Once dry you can install the insulation and press firmly in place. **Fig 3**

STEP 7. Repeat for all the other panels



Fig 3

STEP 8. You can now install your headliner.