



INSTALLATION INSTRUCTIONS

Boom Mat Damping Material

KIT CONTENTS: Boom Mat 2mm thick

- #50200 – (2) 12" x 12-1/2" (2.1 sq. ft.) Sheets of Damping Material
- #50202 – (4) 12" x 12-1/2" (4.2 sq. ft.) Sheets of Damping Material
- #50204 – (8) 12" x 12-1/2" (8.3 sq. ft.) Sheets of Damping Material
- #50206 – (6) 12-1/2" x 24" (12.5 sq. ft.) Sheets of Damping Material
- #50210 – (10) 12-1/2" x 24" (20.8 sq. ft.) Sheets of Damping Material
- #50212 – (20) 12-1/2" x 24" (41.7 sq. ft.) Sheets of Damping Material
- #50214 – (30) 12-1/2" x 24" (62.5 sq. ft.) Sheets of Damping Material

KIT CONTENTS: Boom Mat XL 4mm thick

- #50221 – (2) 12-1/2" x 24" (4.2 sq. ft.) Sheets of Damping Material
- #50222 – (5) 12-1/2" x 24" (10.4 sq. ft.) Sheets of Damping Material
- #50223 – (10) 12-1/2" x 24" (20.8 sq. ft.) Sheets of Damping Material
- #50223 – (15) 12-1/2" x 24" (31.2 sq. ft.) Sheets of Damping Material

TOOLS:

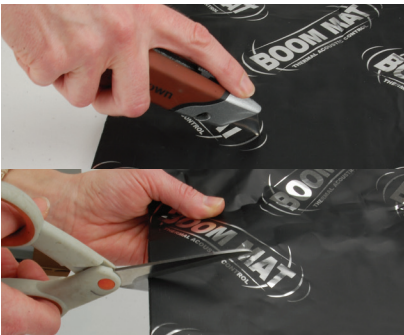
- Boom Mat blade lock knife (050216), Boom Mat installation roller (050218)
- Cardboard/Poster board to use as a template

NOTES:

It is not required to clean the area that the Boom Mat is being installed. However, the cleaner the area the stronger the bond will be. When applying damping material, the aluminum skin edge can be sharp. Use roller or heavy duty gloves when applying.

SURFACE PREP:

Vacuum installation area to remove all loose debris. Then clean with isopropyl alcohol, soapy water, or a wax/grease remover. Allow sufficient time to dry before installation of Boom Mat products.



INSTRUCTIONS:

1. Trim the Boom Mat Material to desired shape and size with your Boom Mat blade lock knife or scissors. A template is helpful when trying to achieve a professional look.



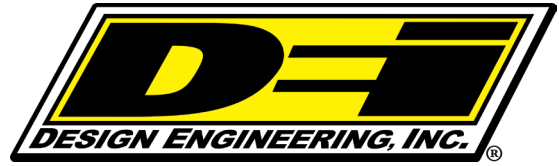
2. Remove the release liner to expose the adhesive.



3. Carefully apply to clean and dry area.



4. Once in the proper location, use your Boom Mat installation roller (050218) and apply pressure to ensure a strong bond between Boom Mat and the installation surface.



INSTALLATION INSTRUCTIONS

Thank you for purchasing genuine Design Engineering, Inc. products. Be sure to always wear the proper safety equipment when installing any DEI product. Design Engineering Inc. WILL NOT BE HELD LIABLE FOR IMPROPER INSTALLATION OR USE OF THIS PRODUCT. Please follow all instructions provided. If you are unsure of any installation procedure, please contact a certified technician.

DESCRIPTION: Under Carpet Lite
50110 - 24" x 70" Under Carpet Lite
50111 - 48" x 70" Under Carpet Lite
50112 - Bulk 1 Linear foot x 70" Under Carpet Lite
50113 - 6ft x 70" Under Carpet Lite

NOTES:
Our Hi-Temp Adhesive Spray (10492) or Adhesive Transfer Tape (50205 - 1 roll or 50207 - 2 rolls) can be used to secure in place if necessary.

UC Lite is installed with gray side up (dark side up)

SURFACE PREP:
Vacuum installation area to remove loose debris. Then clean with isopropyl alcohol, soapy water or wax/grease remover. Allow sufficient time to dry before installation of Boom Mat products

NOTE OF CAUTION: Wear eye and hand protection when installing all materials. Use spray adhesive in a well ventilated area.

INSTRUCTIONS:

1. Making a template will aid in proper and professional installations.
2. Trim Boom Mat Under Carpet Lite to desired size using scissors or knife.
3. After Boom Mat Under Carpet Lite is set in proper location, you may apply spray adhesive (DEI Part 50490) to both the Under Carpet Lite material and the surface it is being installed on to secure in place if desired. Or use Adhesive Transfer Tape (50205 - 1 roll or 50207 - 2 rolls)



UC Lite trimmed & being applied with spray adhesive



UC Lite installed with gray side up