

## PRODUCT INSTRUCTIONS

Thank you for purchasing genuine Design Engineering, Inc. products. Be sure to always wear the proper safety equipment when installing any DEI product. Design Engineering, Inc. WILL NOT BE HELD LIABLE FOR IMPROPER INSTALLATION OR USE OF THIS PRODUCT. Please follow all instructions provided. If you are unsure of any installation procedure, please contact a certified Powersports technician.

**DESCRIPTION:** Heat Shield for Polaris® Slingshot™

**OVERVIEW:** Pre-formed heat shield to reduce rider discomfort.

**PART NUMBER(s):** 902472

**APPLICATION(s):** Polaris® Slingshot™ 2015-16 SL LE

**KIT CONTENTS:**

Main Heat Shield (A)	QTY 1
Hardware Bag	QTY 1
Product Instructions	QTY 1

**TOOLS NEEDED:** Spring puller, basic hand tools, work gloves, safety glasses.

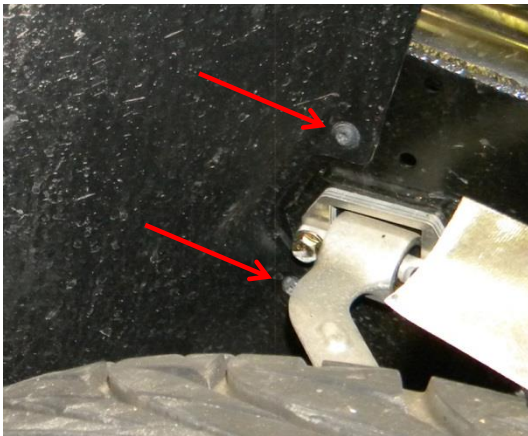


Figure 1



Figure 2

1. **⚠ CAUTION:** Make sure the engine and exhaust are cool before attempting installation.
2. You will need access to the bottom of the vehicle to complete installation. Refer to Polaris owner's manual for correct lifting procedure.
3. Remove right side Torx screws that are holding the right side rocker panel just above and below the A-arm. **(Fig. 1)**
4. Remove top Torx bolt that connects the rocker panel to the main chassis. **(Fig. 2)**
5. Using a spring puller, remove the muffler spring closest to the firewall. **(Fig 3)**
6. **⚠ CAUTION:** The edges of the shield can be sharp. Wear work gloves when handling the shield. Insert the shield along the right side of the muffler. Bend and fold the shield around muffler and slide into position on the firewall. It will take some pressure to manipulate the shield, but the shield will bend back straight once in position. The loose rocker panel allows



Figure 3



Figure 4

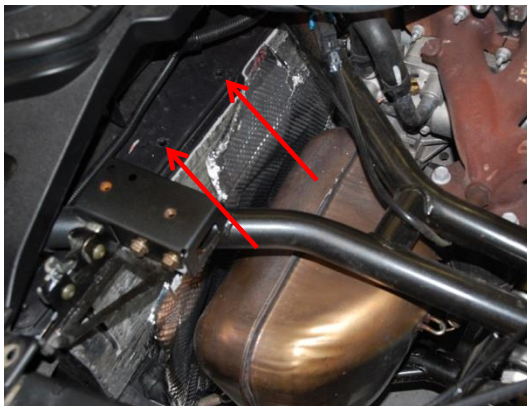


Figure 5

extra room to help make the bend around the muffler possible. **(Fig 4)**

7. Remove plastic rivets along top of firewall **(Fig 5)**
8. Fold down top flap of shield and insert supplied Phillips head screws and fender washers into the top of the firewall. **(Fig 6)**
9. Attach bottom of shield to frame tube using the supplied hose clamps and tighten. **(Fig 7)**
10. Align the shield to the fire wall. Reach under dashboard and tighten the top Phillips screws using supplied locknuts and washers.
11. Reinstall muffler spring and Torx screws.
12. Please refer to separate instruction sheet for the transmission tunnel and passenger side. Additional installation pictures can be found at [www.deipowersports.com](http://www.deipowersports.com)

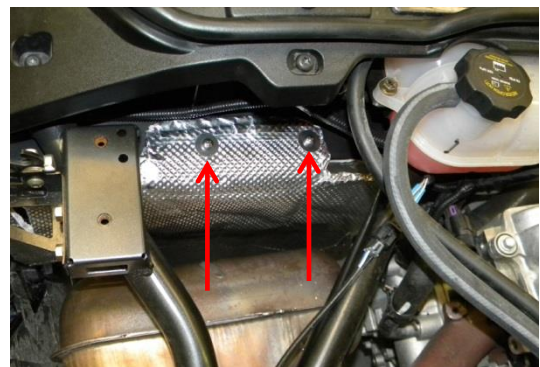


Figure 6

Design Engineering, Inc.  
604 Moore Rd Avon Lake, Ohio 44012  
800-264-9472 [deipowersports.com](http://deipowersports.com)

INS2008 REV 1/16



Figure 7

**PRODUCT INSTRUCTIONS**

Thank you for purchasing genuine Design Engineering, Inc. products. Be sure to always wear the proper safety equipment when installing any DEI product. Design Engineering, Inc. WILL NOT BE HELD LIABLE FOR IMPROPER INSTALLATION OR USE OF THIS PRODUCT. Please follow all instructions provided. If you are unsure of any installation procedure, please contact a certified Powersports technician.

**DESCRIPTION:** Heat Shielding for passenger and transmission areas on Polaris® Slingshot™

**OVERVIEW:** Pre-cut heat shield materials to reduce rider discomfort. All materials are marked with a letter which is referenced below.

**PART NUMBER(s):** 902473

**APPLICATION(s):** Polaris® Slingshot™ 2015-16 SL LE

**KIT CONTENTS:**

Inner Rocker Panel Covers (B)	QTY 2
Transmission Tunnel (C)	QTY 6
Passenger Foot well Cover (D)	QTY 1
Dash Panel Shield (E)	QTY 1
Hardware Bag	QTY 1
Cool Tape 1.5" x15	QTY 1

**TOOLS NEEDED:** Knife, cleaning solution, rag



Figure 1



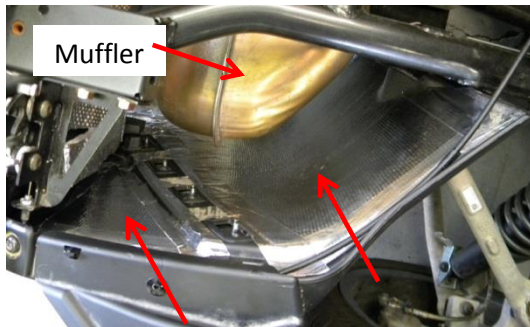


Figure 2



Figure 3

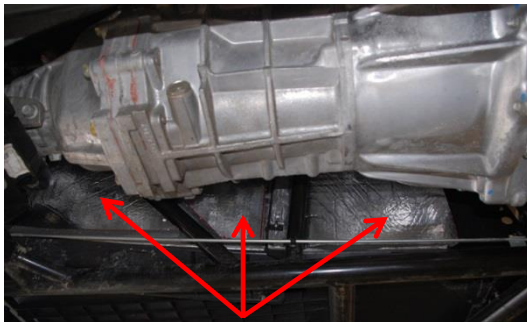


Figure 4a Driver side

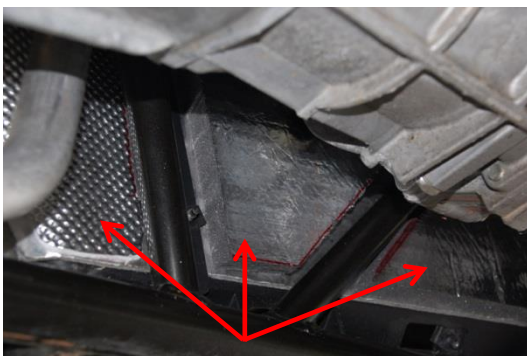


Figure 4b Passenger side

1. **⚠ CAUTION:** Make sure the engine and exhaust are cool before attempting installation.
2. You will need access to the bottom of the vehicle to complete installation. Refer to Polaris owner's manual for correct lifting procedure.
3. See the entire panel layout as it relates to the position of the vehicle. **(Fig. 1)**
4. **Rocker Panel:** Lift the hood and clean area on the right side rocker panel using a mild cleaner.
5. Line up the precut reflective pieces labeled "B" and peel and stick into place. **(Fig. 2)**
6. Using the supplied 1.5" Cool Tape, seal the edges of the material. **(Fig. 2)**
7. **Transmission Tunnel:** Clean the area underneath the transmission tunnel with a mild cleaner. There is not a lot of room so installing the panels is easier if you score the release liner in half. This allows you to peel half the area and stick into place. Then peel the remaining liner for a clean fit. **(Fig. 3)**
8. Start with the driver side pieces, peel and stick them into place over the top of the existing heat shielding. **(Fig. 4a)** Again, installation is easiest if you score the release liner and peel the backing off in sections. Passenger side **(Fig. 4b)**
9. **Passenger Foot Well:** Clean the area thoroughly before installing. Align shield with water drain holes on passenger side. The end of the shield will slide in between the floor panels. **(Fig 5)** Peel backing from shield and stick into place. The front holes will line up with the body screws. **(Fig 6)**

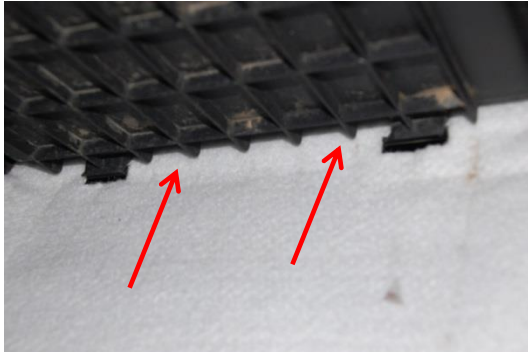


Figure 5



Figure 6



Figure 7

10. Use supplied M6 Nylock Nuts and washers to secure bottom shield into place, connecting to the factory screws. **(Fig 7)**
11. **Dashboard:** Remove Torx screws and radio head unit. Install piece **E** with foil facing the engine bay. **(Fig 8)**
12. Reinstall radio unit and Torx screws.
13. Please refer to separate instructions for main firewall heat shield. Additional installation pictures can be found at [www.deipowersports.com](http://www.deipowersports.com)

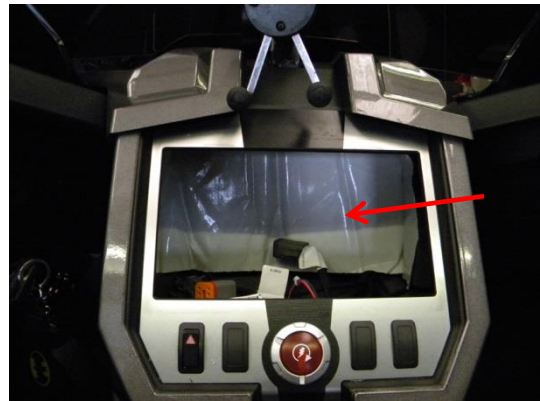


Figure 8