

INSTALLATION INSTRUCTIONS

Thank you for purchasing genuine Design Engineering, Inc. products. Be sure to always wear the proper safety equipment when installing any DEI product. Design Engineering Inc. WILL NOT BE HELD LIABLE FOR IMPROPER INSTALLATION OR USE OF THIS PRODUCT. Please follow all instructions provided. If you are unsure of any installation procedure, please contact a certified technician.

DESCRIPTION: C5 & C6 Corvette Tunnel Shield,
4 Piece Side Shields Kit and Complete 5 Piece kits

KIT CONTENTS:

- Tunnel Shield Plate Shield (1 Piece 50525, 50526, 50530, 50532)
Tunnel Side Shields (4 Pieces 50529, 50531, 50530, 50532)
• Application roller (5 piece kit only 50530, 50532)
• Instructions

TOOLS NEEDED:

- Application roller
Cleaner & Degreaser
Rags/Towels
Tools for midpipe removal

SAFETY:

- Safety glasses
Gloves

NOTE OF CAUTION: Wear eye and hand protection when installing all materials. Use cleaners or degreasers in a well ventilated area

OVERVIEW: Corvettes are notorious for hot trans tunnels in the interior. These shields eliminate the heat and make driving cool and comfortable.

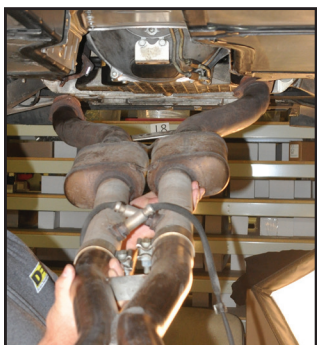


Fig 1

STEP 1. Lift vehicle and support per factory service manual.

STEP 2. Remove exhaust center section per factory service manual. **Fig 1**



Fig 2

STEP 3. Once exhaust is removed, clean the tunnel area top (and sides if installing the side shields), to remove dirt and grease. This area must be clean for the adhesive to stick. **Fig 2**

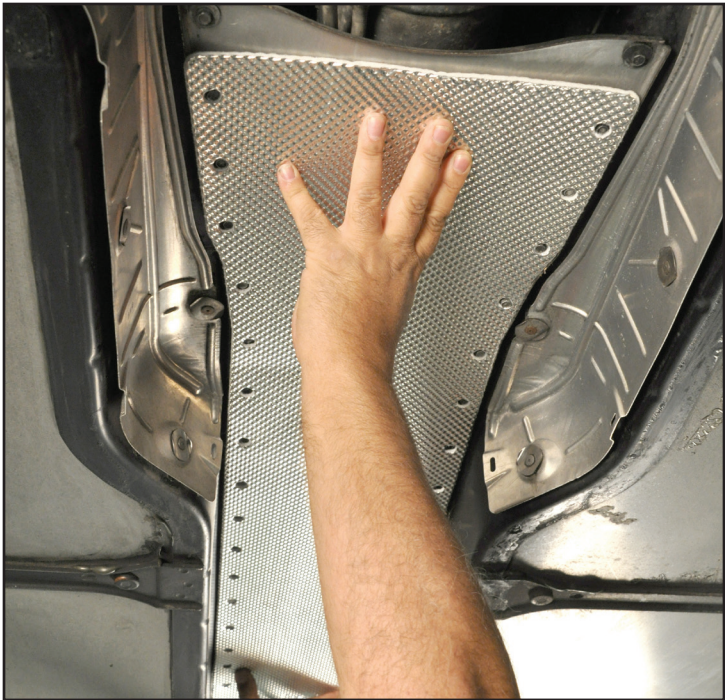


Fig 3

STEP 4. Test fit the top shield before removing the adhesive backing. (Notice the shield starts at the second bolt from the front of the vehicle)
Fig 3

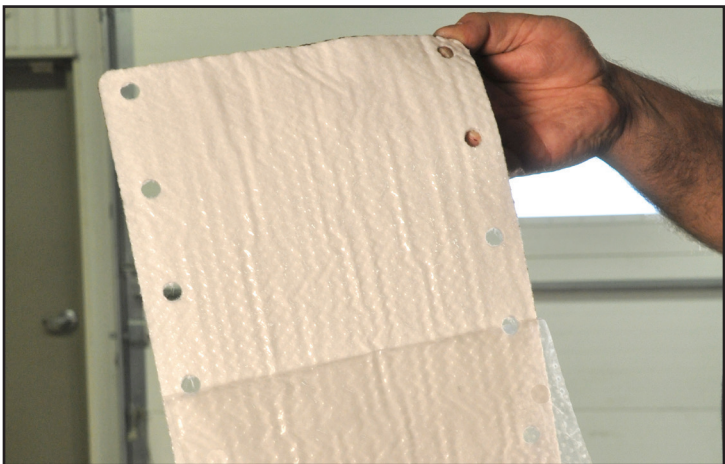


Fig 4

STEP 5. Once you have it test fitted, remove a few inches of the protective film on the back of the shield. **Fig 4**

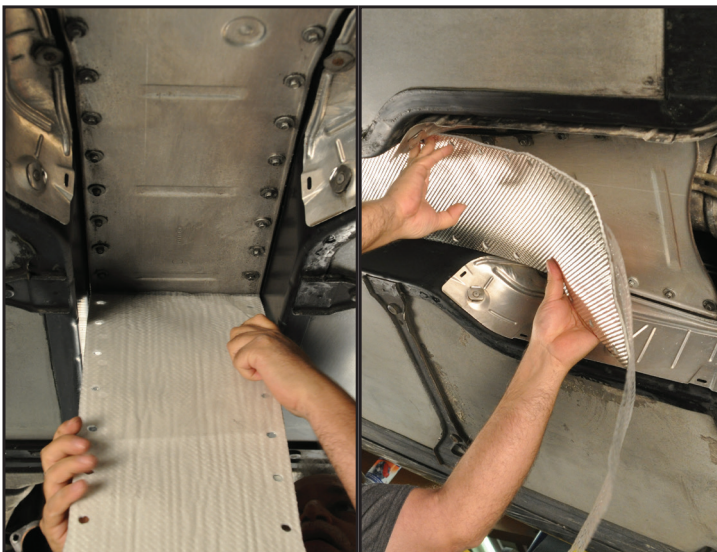


Fig 5

STEP 6. Start by putting this part of the shield in place and firmly pressing on the shield. Peel off more of the backing and work the shield into place as you go. Do not remove all the backing and try to install the shield. **Fig 5**

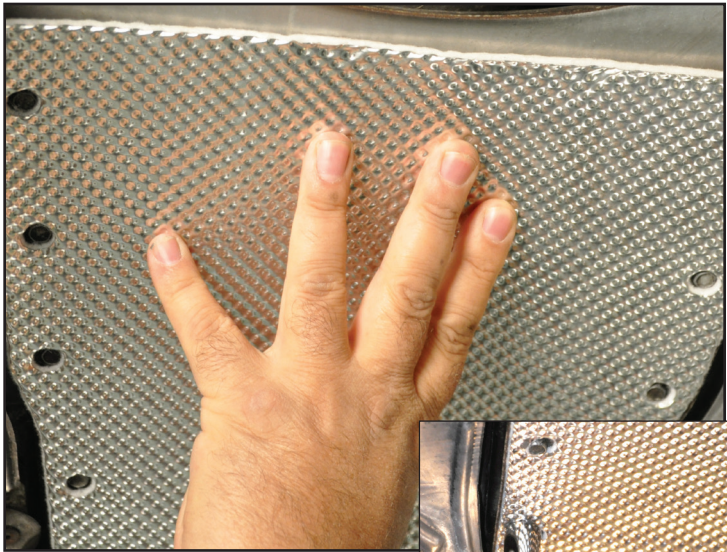


Fig 6



Fig 7

STEP 7. Once the shield is in place press firmly to make sure you have good contact all around the shield. **Fig 6**

TIP: To make sure the shield is adhered well around the tunnel plate bolts, use a 12mm socket to push up around the bolts and press the material against the tunnel plate. **Fig 7**

STEP 8. If you have the optional side shields see the instructions below. If not reinstall the exhaust system.

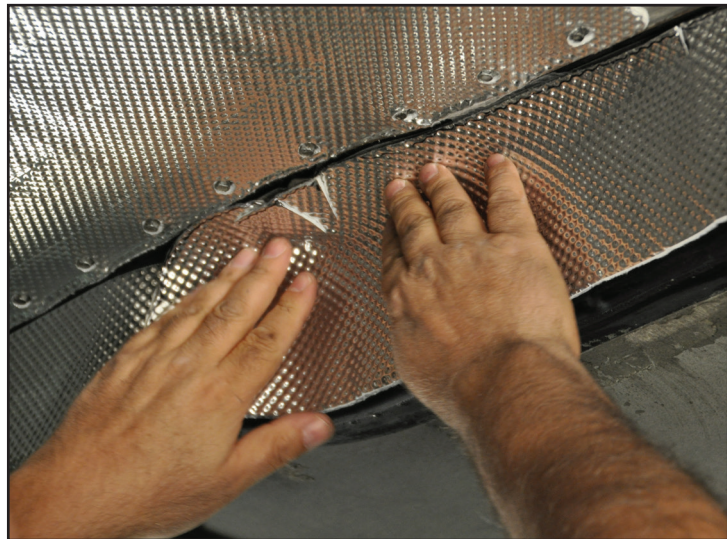


Fig A

OPTIONAL SIDE SHIELD KIT (050529):

STEP 1. Remove the exhaust center section per the factory service manual.

STEP 2. Make sure the sides of the tunnel are clean and dry. You can use brake cleaner to degrease the area if needed.

STEP 3. The kits include 4 shields and a roller. Test fit the shields first before removing the backing on the adhesive. The shield is marked to what position they go. At this time you can form the front shields into place. **Fig A**



Fig B

STEP 4. Starting at the rear of the tunnel peel a few inches of the backing and push the shield firmly into place. Peel a few inches at a time and keep working the shield into place as you go. **Fig B**

Repeat for the other side.

STEP 5. Do the same process for the front shield making sure you mold the shield into place over the factory heat shield. Work your way to the front and repeat for the other side. **Fig C**

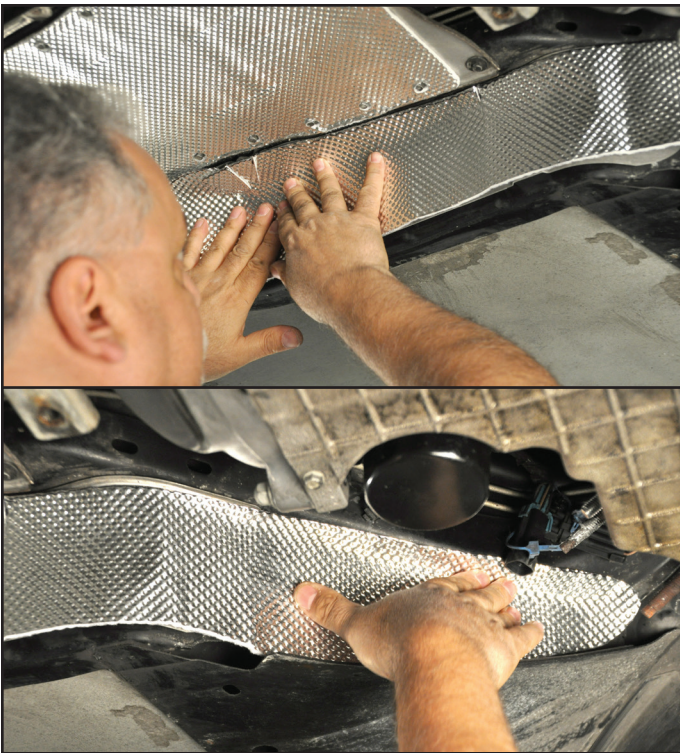


Fig C

STEP 6. Use the supplied roller to press the shields into place to ensure a good contact. **Fig D**

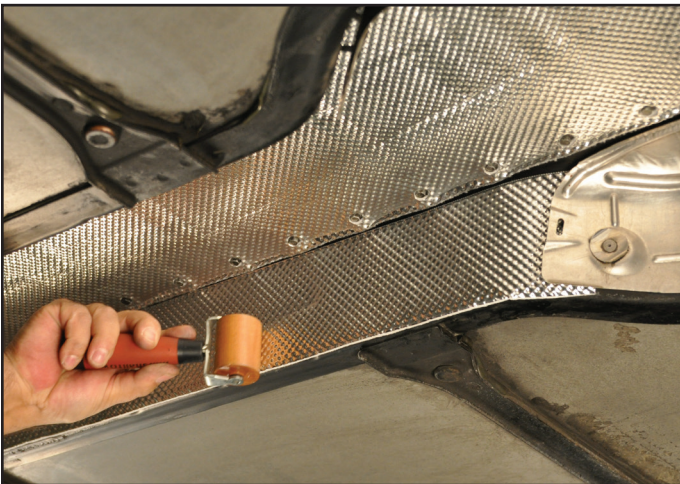


Fig D

STEP 7. Reinstall the exhaust making sure to install the clips and wires in the same locations for the O2 sensors. **Fig E**

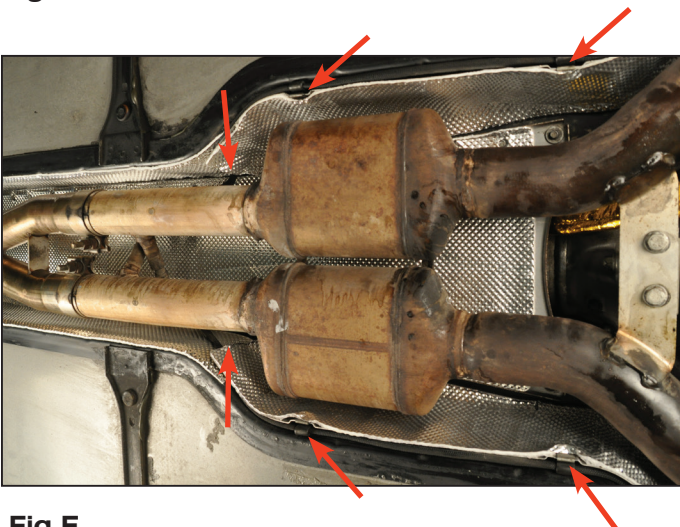


Fig E