

Design Engineering Inc.

604 Moore Road
Avon Lake, OH 44012



THERMAL TUNING PRODUCTS

Installation Instructions

DEI Stainless Steel Locking Ties™

PART NO. 010201 & 010202

KIT CHECKLIST	
1pk	SS Locking Ties

NOTE
SS Ties are used for securing exhaust wrap.

DIRECTIONS

- 1 - Push tail end of the tie through the buckle end of the tie. (Fig. B,C)
- 2 - It maybe necessary to use a pair of pliers to tighten the Locking Tie.
- 3 - For a snug fit, hold the locking mechanism of the Locking Tie with a flat head screw driver as you pull the locking tie end with a pair of pliers. (Fig. D)



Fig. A (Buckle end of tie)

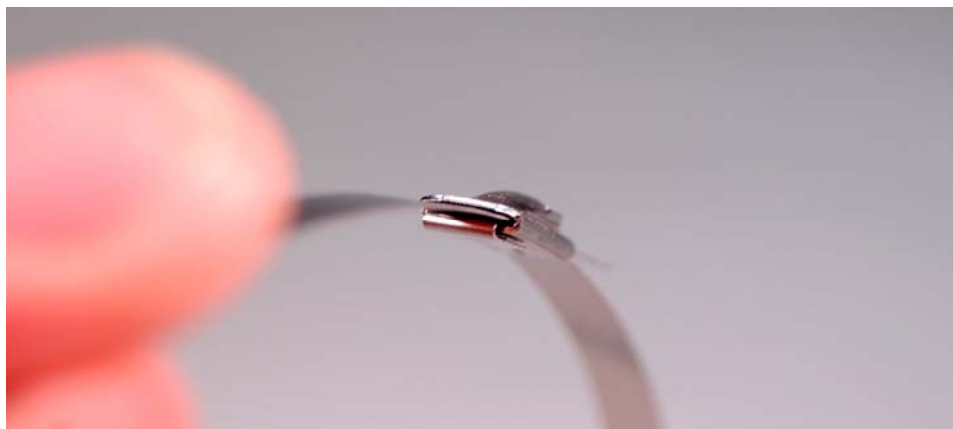


Fig.B

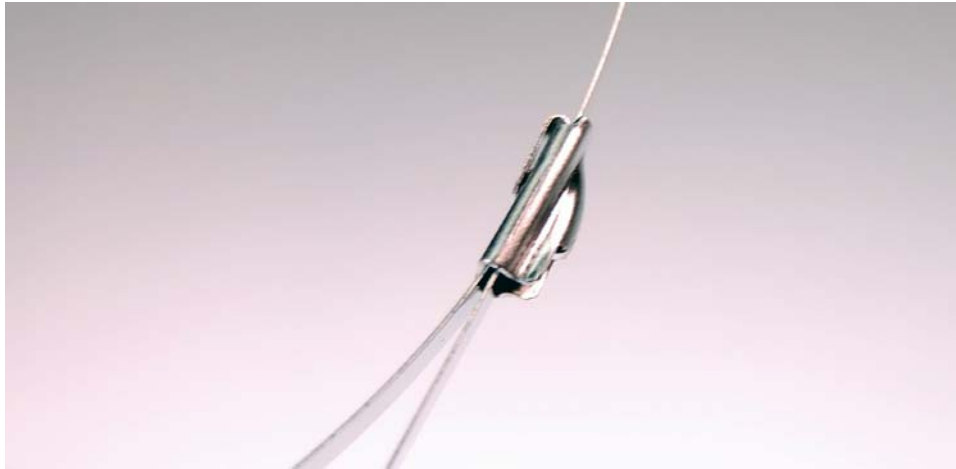


Fig. C



Fig. D